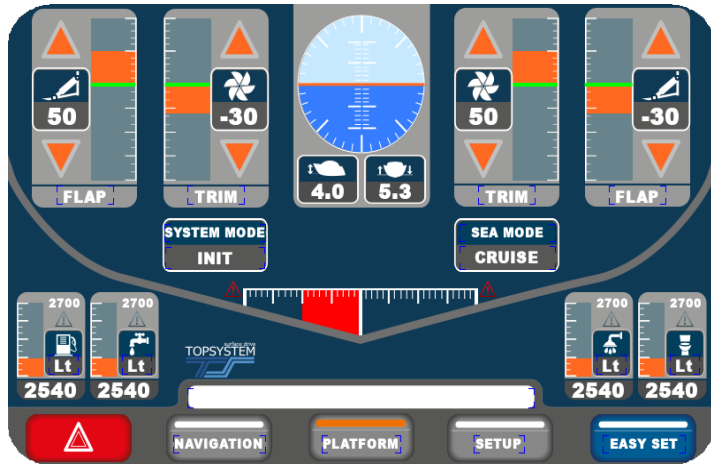


SURFACE DRIVES



EASY SET TRADE MARK - EXCLUSIVE PRODUCTS

The electronic system device, employs a software which automatically adapts to the propulsions' position depending on the boat loading conditions and on the revolutions of the engine. It is by intervening on both , trim and flap (INTERCEPTORS) that the vessel achieves its highest performance.



EASY SET

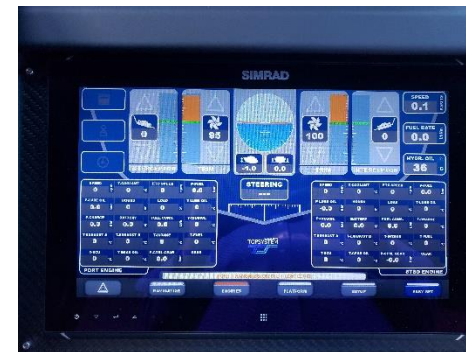
Trim – flap - pitch –roll automatic control system



TOUCH SCREEN 10"

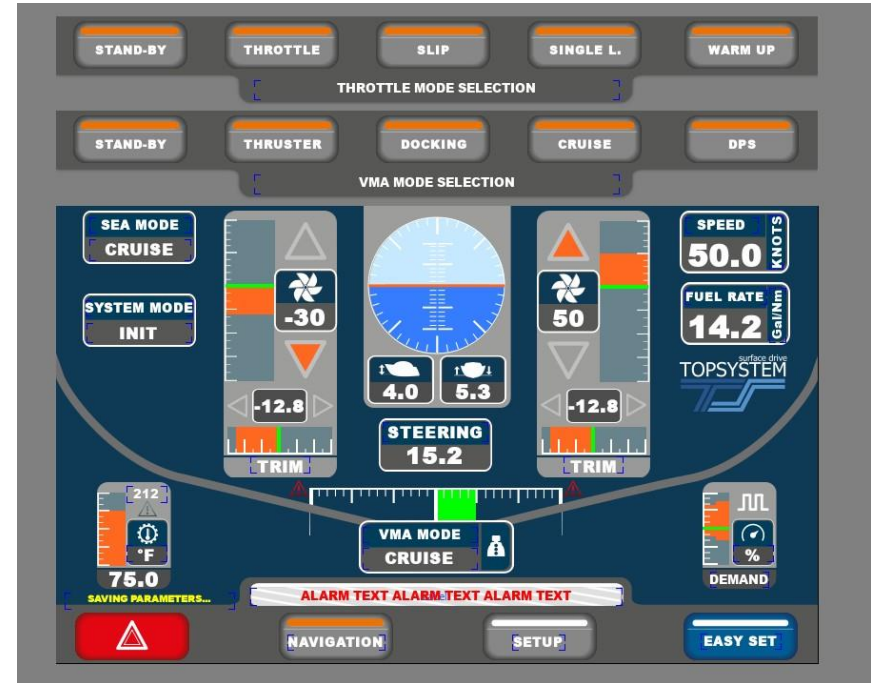
NAVICO SIMRAD INTEGRATION

TOUCH SCREEN 7"

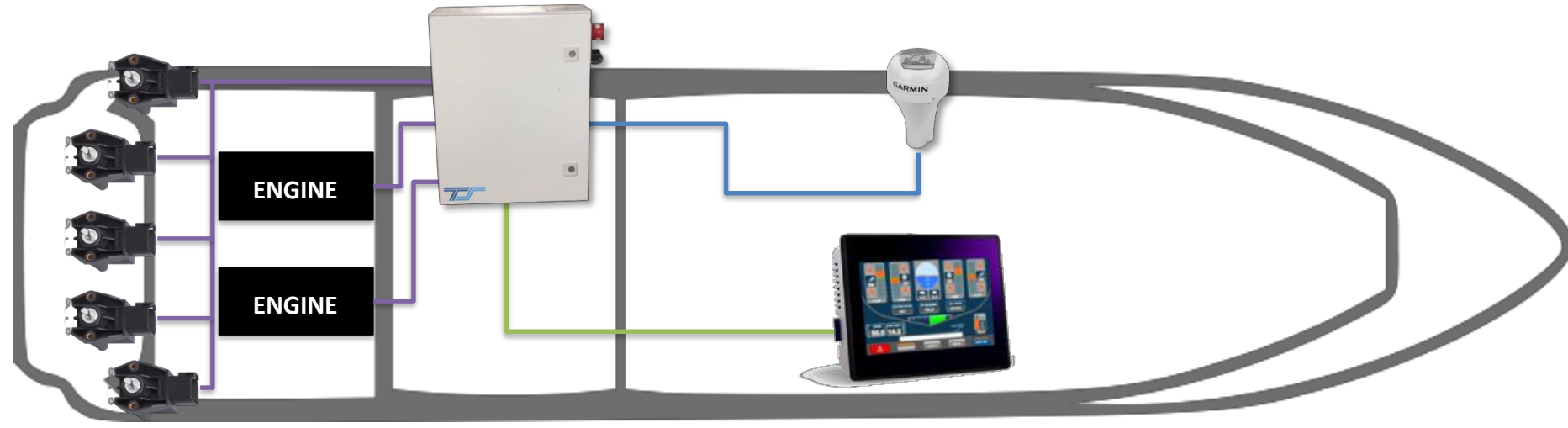


Functions:

- control of trim tabs and shaft trimming
- steering assistance
- roll stabilization
- steering limitation at high speed
- maneuvering assistance
- shaft parking
- engine data monitoring
- aft platform control



Hardware overview



Service levels

1. Free-access service page

- Check single units status
- Check communication with peripherals
- Read firmware version
- **Take pictures of SYSTEM STATUS page, ALARMS page and HISTORY page and send them to TopSystem service office!**

2. Password-protected service page

- Check input signals status
- Manual comands (be careful)
- Calibrate the system after hardware replacement



The screenshot displays two main sections of the EASY SET interface:

SYSTEM STATUS

CAN ID	BOARD TYPE	BOARD STATUS
001	OM120/135/145 16+16	ONLINE
002	OM120/135/145 16+16	ONLINE
003	OM220 4A) TEMP/RES	ONLINE
004	OM220 4A) TEMP/RES	ONLINE
005	ELOBAU ANGLE SENS	ONLINE
006	ELOBAU ANGLE SENS	ONLINE
007	NO BOARD	N/A
008	NO BOARD	N/A
009	ELOBAU ANGLE SENS	ONLINE
010	NO BOARD	N/A
011	ELOBAU ANGLE SENS	ONLINE
012	ELOBAU ANGLE SENS	ONLINE
013	NO BOARD	N/A
- - -	NO BOARD	N/A
- - -	NO BOARD	N/A
101	OM900B SLOPE S	ONLINE

CPU LOAD
ACTUAL (%) **41** MAX (%) **46**

CPU FIRMWARE VERSION
V1037 11.01.16 full
NOTE: version must be minimum 10.37

CPU COMMUNICATION STATUS
NMEA0183 **ONLINE**
CPU ENGINE DATA TRANSFER **ON**
SLOPE SENSOR **DISCONNECTED**

CPU INITIALIZATION STATUS
0 - INITIALIZATION OK

SYSTEM DYNAMIC VALUES

LOAD ACT %	LOAD TOT %	RPM ACTUAL	MOV.DUE TO
0	0	0	IDLE
80	0	0	IDLE
0	0	0	IDLE

MANOEUVR. MODE: OFF
STEERING MODE: OFF

FLAP UP/LO LIMITS: 100 -100
AVG PITCH/ROLL: 0.0 0.0
TARGET PITCH: 0.0

ADVANCED SETUP

PLATFORM OPEN CMD	ON/OFF	PLATFORM OPEN EV CMD
PLATFORM CLOSE	ON/OFF	PLATFORM CLOSE EV CMD
PLATFORM LOCK OPEN	ON/OFF	PLATFORM UNLOCK EV CMD
PLATFORM LOCK CLOSE	ON/OFF	PLATFORM LOCK EV CMD
CENTER TRIM UP	ON/OFF	CENTER TRIM UP EV CMD
CENTER TRIM DN	ON/OFF	CENTER TRIM DN EV CMD
CENT. TRANSM. OIL LEVEL1	ON/OFF	DISP
PORT TRANSM. OIL LEVEL1	ON/OFF	DISP
PORT TRANSM. OIL LEVEL2	ON/OFF	DISP
PORT TRANSM. OIL LEVEL3	ON/OFF	DISP
CENT. TRANSM. OIL LEVEL2	ON/OFF	DISP
STBD TRANSM. OIL LEVEL1	ON/OFF	DISP
STBD TRANSM. OIL LEVEL2	ON/OFF	DISP
STBD TRANSM. OIL LEVEL3	ON/OFF	DISP
CENT. TRANSM. OIL LEVEL3	ON/OFF	DISP
PLATFORM MOVING BUZZER	ON/OFF	PLATFORM MOVING BUZZER
PLATFORM ALARM BUZZER	ON/OFF	PLATFORM ALARM BUZZER

I/O STATUS

WARNING! ON/OFF BUTTONS MAY CAUSE DAMAGE TO THE BOAT

HI OIL TEMP/GRAY ALM ON/OFF
LL OIL LEVEL BLACK WARN ON/OFF
HH OIL TEMP/BLACK ALM ON/OFF
HYDRAULICS OIL LL ON/OFF
PANIC BUTTON ON/OFF

PORT STEERING LIMIT CMD ON/OFF
STBD STEERING LIMIT CMD ON/OFF
OIL STDBY PUMP ON CMD ON/OFF
DISP ON/OFF
DISP ON/OFF

WH ALARM BUZZER ON/OFF

Service levels

3. Remote assistance
 - Advanced diagnostic
 - Firmware upgrade

